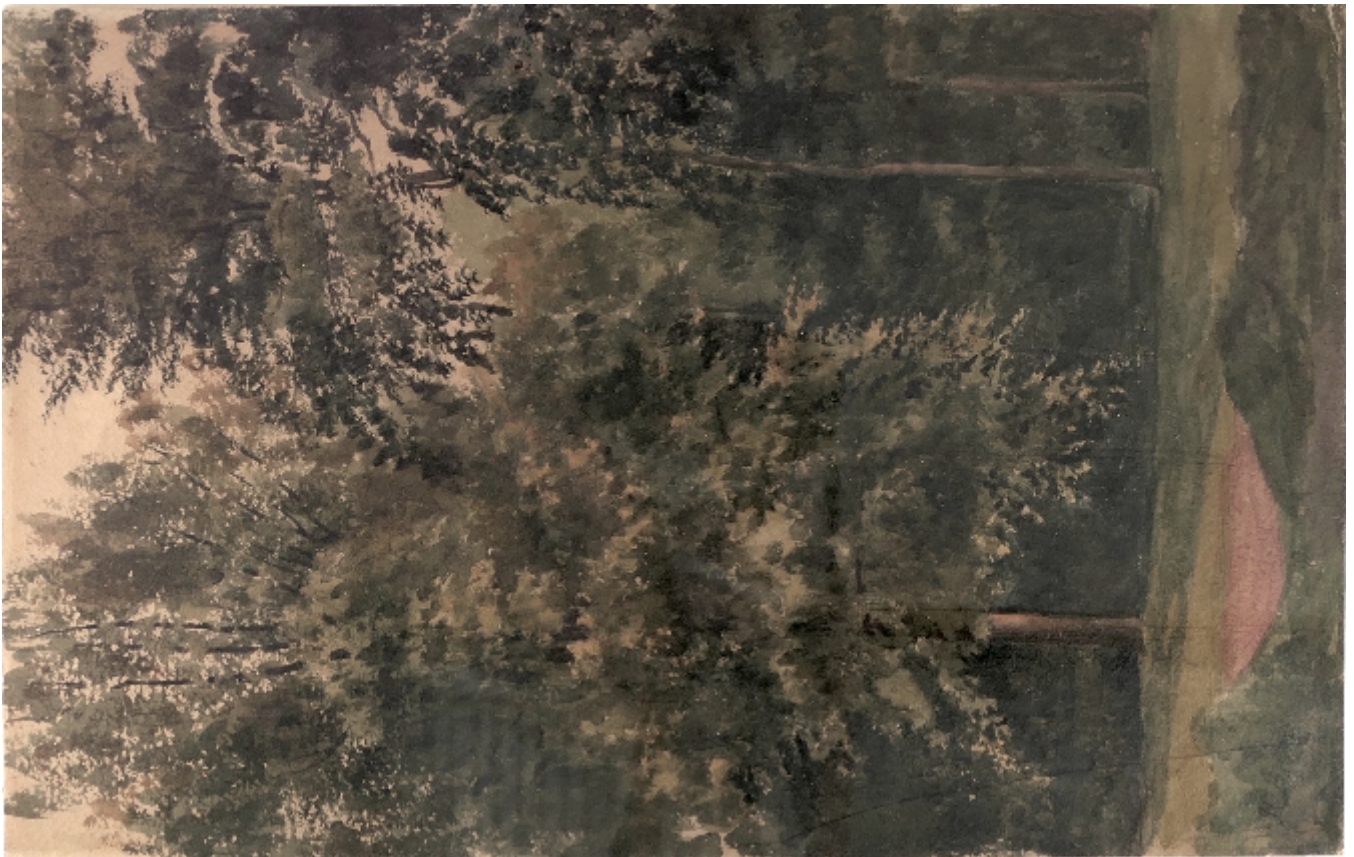


## Study of trees

Peter De Wint O.W.S

£320



REF: 1042

Height: 47 cm (18.5")

Width: 30 cm (11.8")

Framed Height: 71 cm (28")

Framed Width: 53.5 cm (21.1")

## Description

The present watercolour, the location of which has not been identified, is an intimate study of a copse of trees. DevWint made a considerable number of such studies of trees, exploring the changing tones of green in the leaves and patterns of light and shade. In this case, the artist explores the deep green shade in a small copse. A Study of Trees was one of two works in lot 45 in the Studio sale of 2nd March 1876, sold to Huish for £3.5.-, which suggests it would have been smaller than the present work, whereas 68, A Wood Scene near Dunster, made £10.10.- to Brady, and could possibly be this more significant piece.