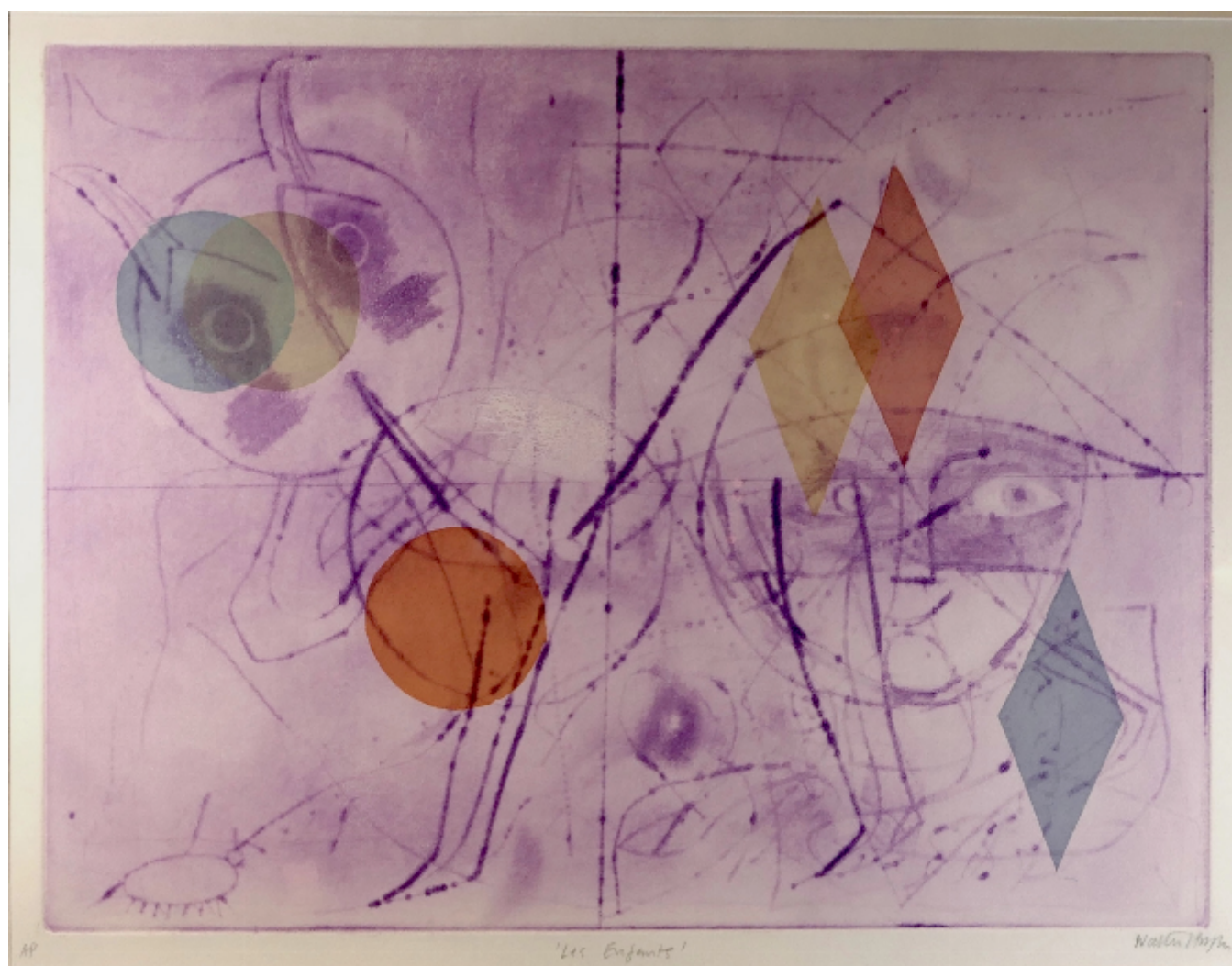


Les Enfants

Walter Hoyle

£400



REF: 1202

Height: 45 cm (17.7")

Width: 39 cm (15.4")

Framed Height: 63 cm (24.8")

Framed Width: 83 cm (32.7")

Description

Hoyle set up Cambridge Print Editions which, with Christie's Contemporary Art, issued many of his later prints. In these he often experimented with subject matter and technique, mixing linocut, etching and aquatint to great effect, as in the present example. Hoyle met his future wife, Denise, in 1954, at the first Great Bardfield Open House exhibition in which he exhibited. Their children, James and Nina, were born in 1956 and 1960 respectively. Denise was French-born and the family made frequent visits to Dieppe, where they owned a flat. It has yet to be established whether the present print was editioned, or if this is one of a small number of proofs made, or perhaps unique. The print is on wove paper, with an unidentified watermark of a P and reverse P joined together. The print is on a full sheet with good margins and deckle edges all round, and is in pristine, white condition. Apologies for the yellowing suggested by the photography - the paper is brilliant white.